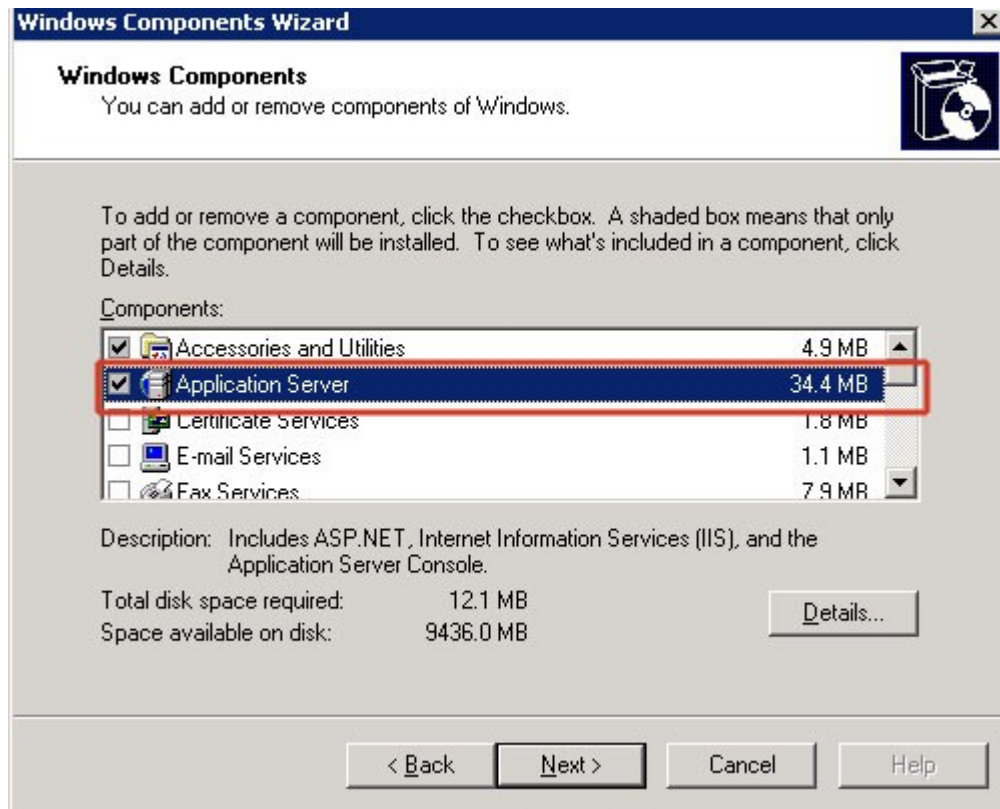


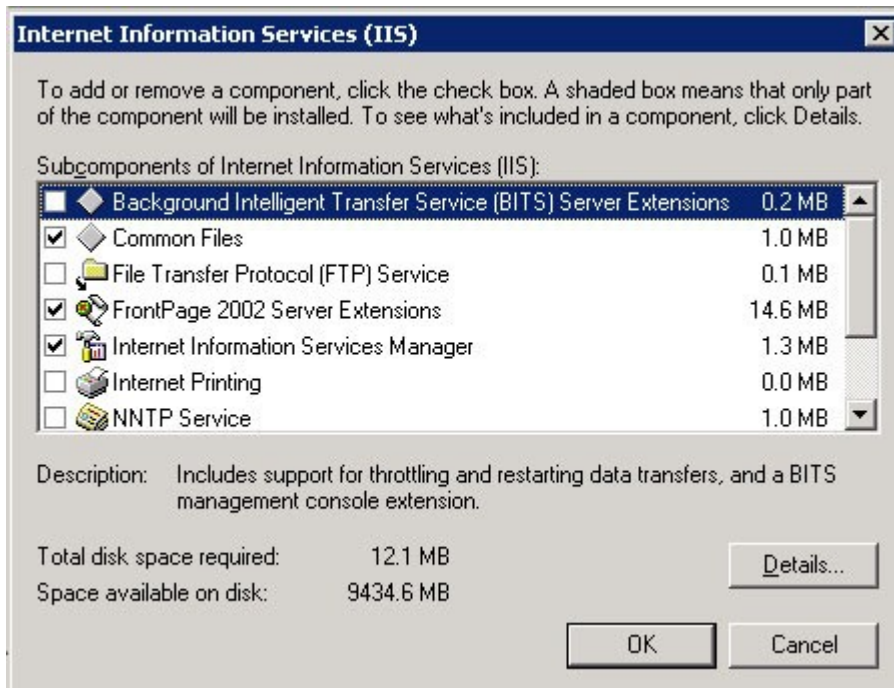
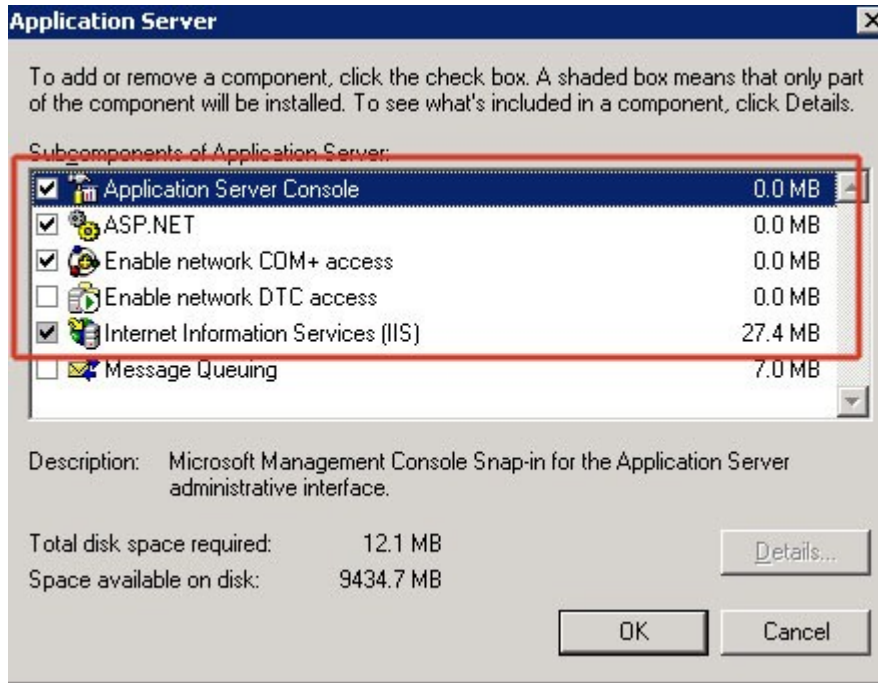
# SyAM Software™

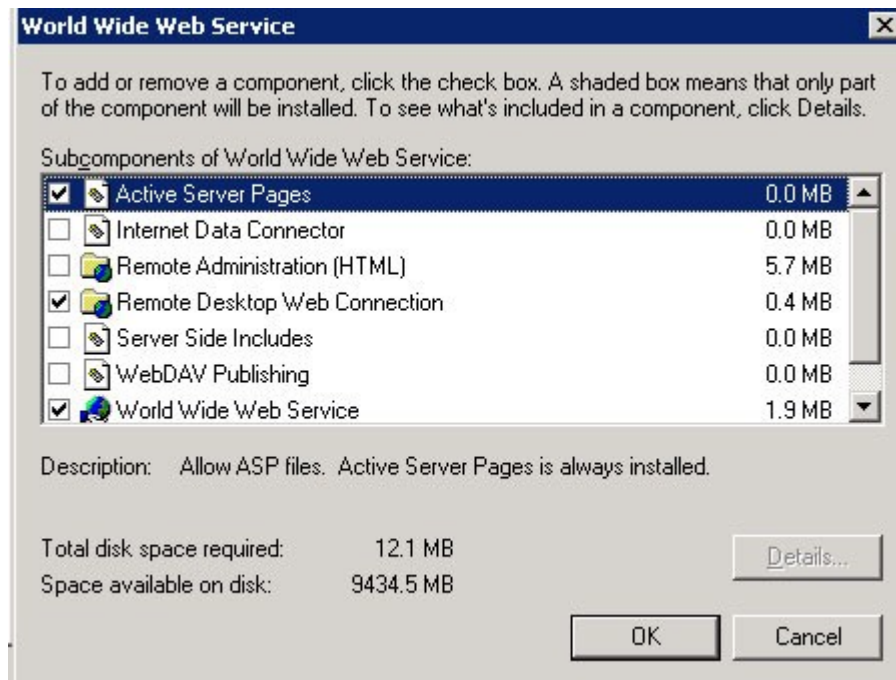
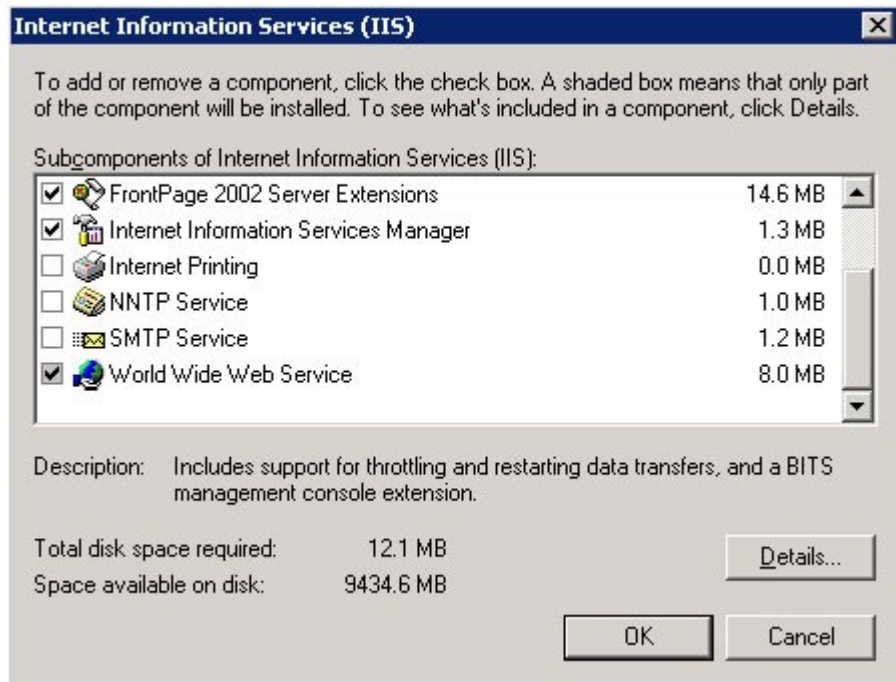
## IIS6 Setup on Windows 2003 for SyAM Software Site Manager

This Tool-tip provides screen shots showing the various installation setup options for IIS6 that are required for Site Manager to work.

**Start – Control Panel – Programs and Features – Turn Windows Features on or off**







***After Installing IIS please remove the Default Web Site and Share point Web Site created by IIS as Site Manager needs to use ports 80 and 443***

To remove the Default Web Site and Share point Web Site go to Programs – Administrative Tools – IIS Manager, then choose the Default Web Site and press the right mouse button and choose Remove.