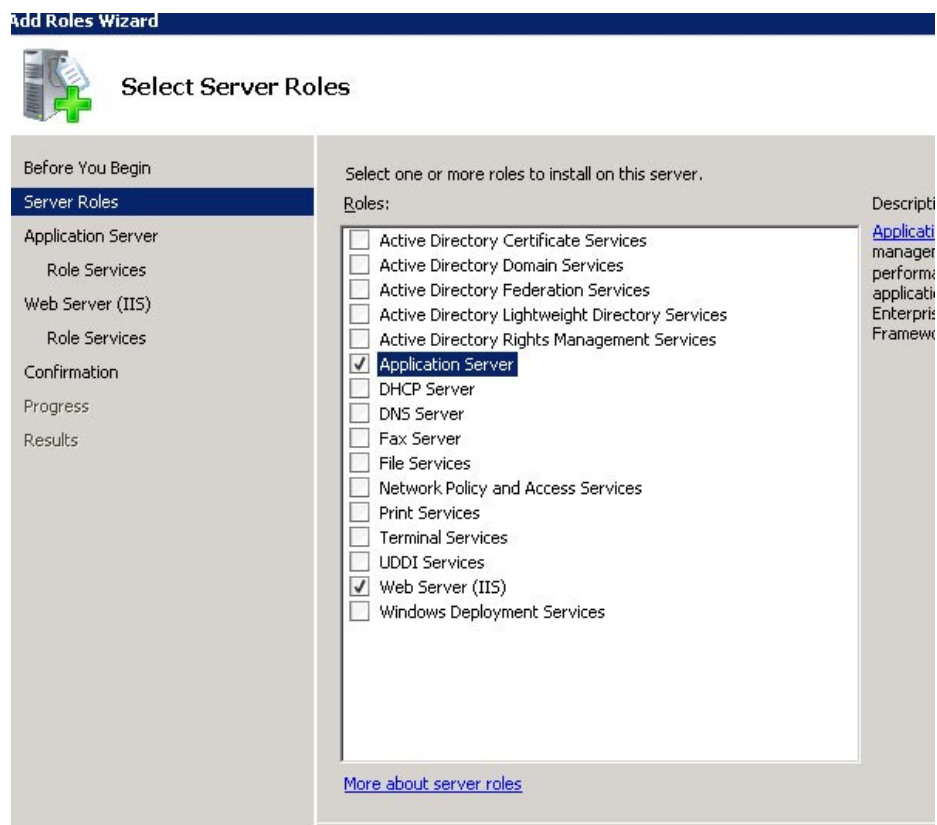


SyAM Software™


IIS7 Setup Windows Server 2008 for SyAM Software Site Manager

This Tool-tip provides screen shots showing the various installation setup options for IIS7 that are required for Site Manager to work.

Start – Control Panel – Programs – Add New Windows Features



Add Roles Wizard

 **Select Server Roles**

Before You Begin

Server Roles

Application Server

 Role Services

Web Server (IIS)

 Role Services

Confirmation

Progress

Results

Select one or more roles to install on this server.

Roles:

- Active Directory Certificate Services
- Active Directory Domain Services
- Active Directory Federation Services
- Active Directory Lightweight Directory Services
- Active Directory Rights Management Services
- Application Server**
- DHCP Server
- DNS Server
- Fax Server
- File Services
- Network Policy and Access Services
- Print Services
- Terminal Services
- UDDI Services
- Web Server (IIS)**
- Windows Deployment Services

More about server roles

Descripti
[Applicati](#)
manag
perform
applicati
Enterpris
Framework

Add Roles Wizard



Select Role Services

Before You Begin

Server Roles

Application Server

Role Services

Web Server (IIS)

Role Services

Confirmation

Progress

Results

Select the role services to install for Web Server (IIS):

Role services:

- Web Server
 - Common HTTP Features
 - Static Content
 - Default Document
 - Directory Browsing
 - HTTP Errors
 - HTTP Redirection
 - Application Development
 - ASP.NET
 - .NET Extensibility
 - ASP
 - CGI
 - ISAPI Extensions
 - ISAPI Filters
 - Server Side Includes
 - Health and Diagnostics
 - HTTP Logging
 - Logging Tools
 - Request Monitor
 - Tracing
 - Custom Logging
 - ODBC Logging

[More about role services](#)

Des
IIS
pro
you
the
(AB
Int
IIS
ser

Add Roles Wizard



Select Role Services

Before You Begin

Server Roles

Application Server

Role Services

Web Server (IIS)

Role Services

Confirmation

Progress

Results

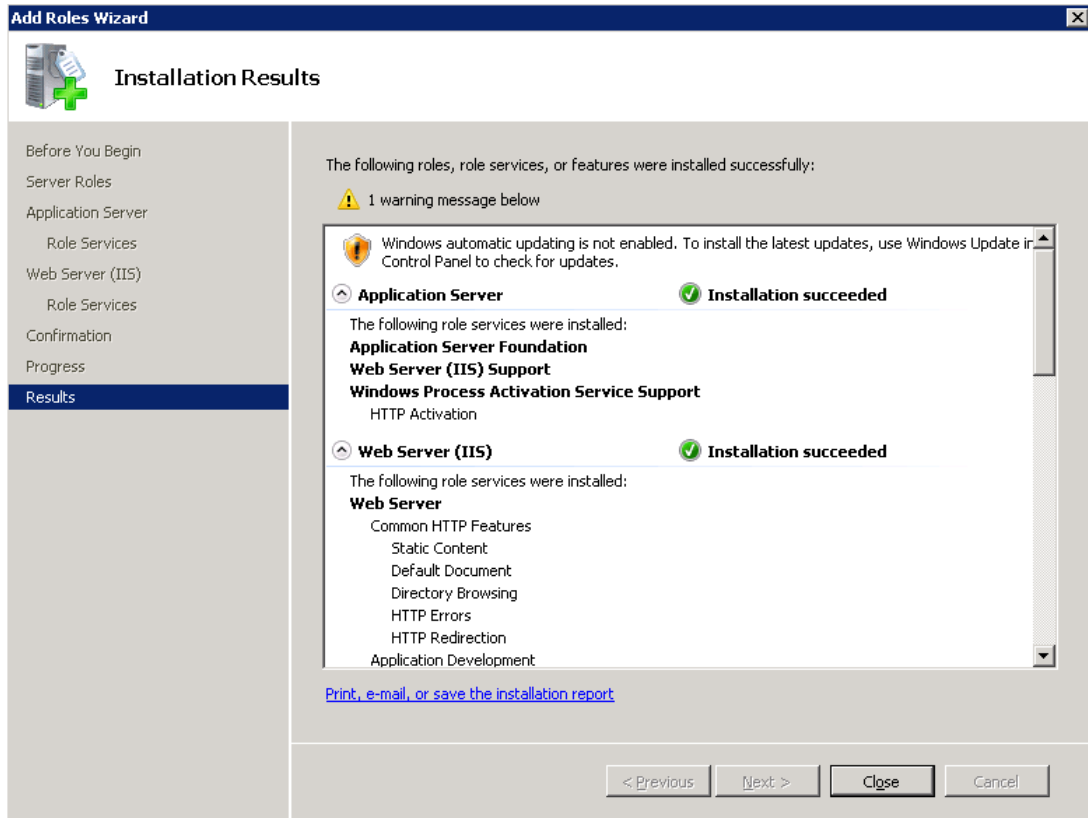
Select the role services to install for Web Server (IIS):

Role services:

- Digest Authentication
- Client Certificate Mapping Authentication
- IIS Client Certificate Mapping Authentication
- URL Authorization
- Request Filtering
- IP and Domain Restrictions
- Performance
 - Static Content Compression
 - Dynamic Content Compression
- Management Tools
 - IIS Management Console
 - IIS Management Scripts and Tools
 - Management Service
- IIS 6 Management Compatibility
 - IIS 6 Metabase Compatibility
 - IIS 6 WMI Compatibility
 - IIS 6 Scripting Tools
 - IIS 6 Management Console
- FTP Publishing Service
 - FTP Server
 - FTP Management Console

[More about role services](#)

De
IIS
pr
yo
th
(A
Int
IIS
se



After Installing IIS please remove the Default Web Site created by IIS as Site Manager needs to use ports 80 and 443

To remove the Default Web Site go to Programs – Administrative Tools – IIS Manager, then choose the Default Web Site and press the right mouse button and choose Remove.

