



**SyAM Software Tool Tip: Agent Deployment utilizing the silent installation
with “Active Directory”**

Table of Contents

Introduction	2
Prerequisites	3
Windows 2003 Server	3
Using the Windows Installer Package – Silent	3
Parameters that can be modified	4
Creating the Windows login script for deployment	4
Configuring the AD Server for Software Deployment Using Scripts	5
Create the Group Policy Object (GPO)	5
Adding Your Script to the Group Policy Object (GPO)	6
Permissions for Running the Group Policy Object (GPO)	9

Table of Figures

Figure 1 - Domain Controller with Active Directory	4
Figure 2 - Domain Properties	6
Figure 3 - Edit Group Policy	7
Figure 4 - GPO Editor – Opening script options	8
Figure 5 - GPO Editor – Adding scripts to the folder	9
Figure 6 - GPO Editor – Copying scripts into the correct folder	9
Figure 7 - GPO Editor – Browsing to your script	10
Figure 8 - GPO Editor – Script installed	10
Figure 9 - Administrative Templates - Logon Scripts	11
Figure 10 - Administrative Templates - Install with elevated privileges	12
Figure 11 - GPO Permissions	13

Introduction

This document provides installation procedures for the deployment of SyAM™ Software Inc. Server and Desktop Monitor software utilizing the silent installation feature of the SyAM software

install-shield package and a Microsoft Windows 2003 Domain Controller Server. This allows the software to be automatically installed to multiple domain computers without any user intervention.

This procedure requires an Administrative login to the actual system for the software to install. Be sure that all share permission and Active directory GPO permissions are set appropriately to access the software.

Prerequisites

Windows 2003 Server

This installation procedure was tested on a Windows 2003 Server designated as a Domain Controller with Active Directory and DNS installed and running. A single Domain Controller, Domain, and AD Forest were created.

Once the Domain Controller with AD has been configured, use the Administrative Tools / Active Directory Users and Computers program to configure a Group Policy for deploying the software package.

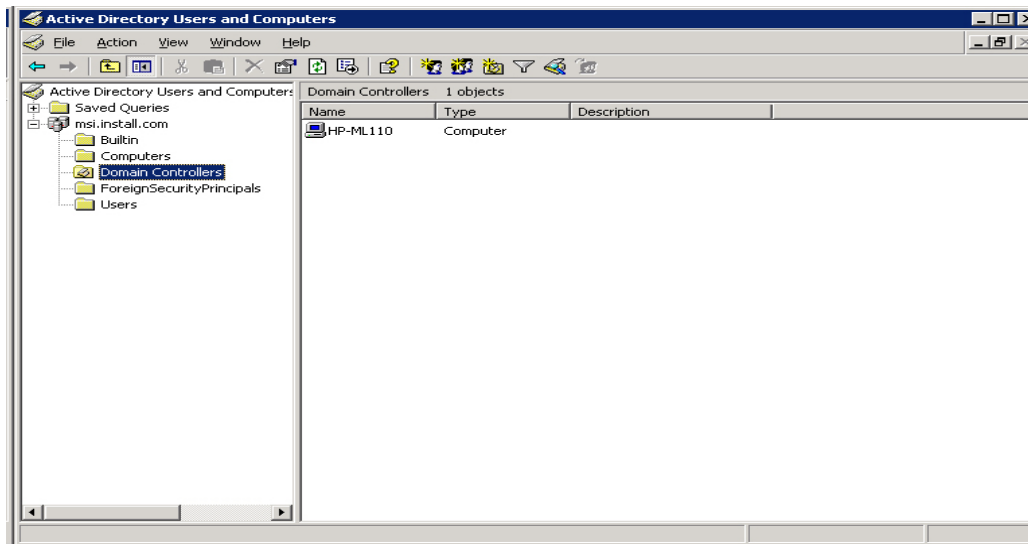


Figure 1 - Domain Controller with Active Directory

Using the Windows Installer Package – Silent

The Command string for the silent installation

- Desktop_Monitor_local_agent /qn **INSTALLDIR="C:\Syam" SERVERMONITOR="SMA" UISAVESETTINGS= "YES" REMOTECONSOLE="YES" SSLENABLE="YES"**

Parameters that can be modified

- **INSTALLDIR**

- This is the logical drive and folder name where you wish to install the software.
- Example C:\Syam
- ***(Please note there can not be any spaces within the folder name)***

- **SERVERMONITOR**

- SMA = Use to install Server/Desktop/Notebook Monitor Agent
- SML = Use to install Server/Desktop/Notebook Monitor Local Interface with Agent

(You must use the "SML" or "SMA" designation even if installing desktop or notebook monitor)

- **UISAVESETTINGS**

- Yes = This must be set to yes for Silent install to work

- **REMOTECONSOLE**

- Yes = This adds the option to the utilities menu for Remote Console User Settings
- No = This does not add the option to the utilities menu.

- **SSEENABLE**

- Yes = This makes the UI SSL encrypted (https)
- No = This does not make the User Interface SSL encrypted (http)

Creating the Windows login script for deployment

Below is an example of a windows login script.

Edit syam-install.bat

```
-----  
echo on  
Net use s: \\192.168.100.134\distros-share /USER:simtest simtest  
s:  
cd \distribution  
  
syam_desktop_monitor.exe /s /v"/qn INSTALLDIR="c:\syam" SERVERMONITOR="SMA"  
PREFERLANG="en" IPMICHECK="SMBUS" UISAVESETTINGS="Yes" IPMIADDON="No"  
REMOTECONSOLE="No" SSEENABLE="No" /11033  
  
Net use s: /del  
-----
```

With the software syam_desktop_monitor.exe on a share drive that is accessible for all users and computers, this script mounts the share drive as S:\ goes to the directory with the software executable file and executes the silent installation command. Upon completion it removes the mounted S drive.

This procedure requires an Administrative login to the actual system for the software to install. Be sure that all share permission and Active directory GPO permissions are set appropriately to access the software.

Configuring the AD Server for Software Deployment Using Scripts

Create the Group Policy Object (GPO)

- 1) From Administrative Tools run the Active Directory Users and Computers program.
- 2) Right-click on your domain.com and open properties.

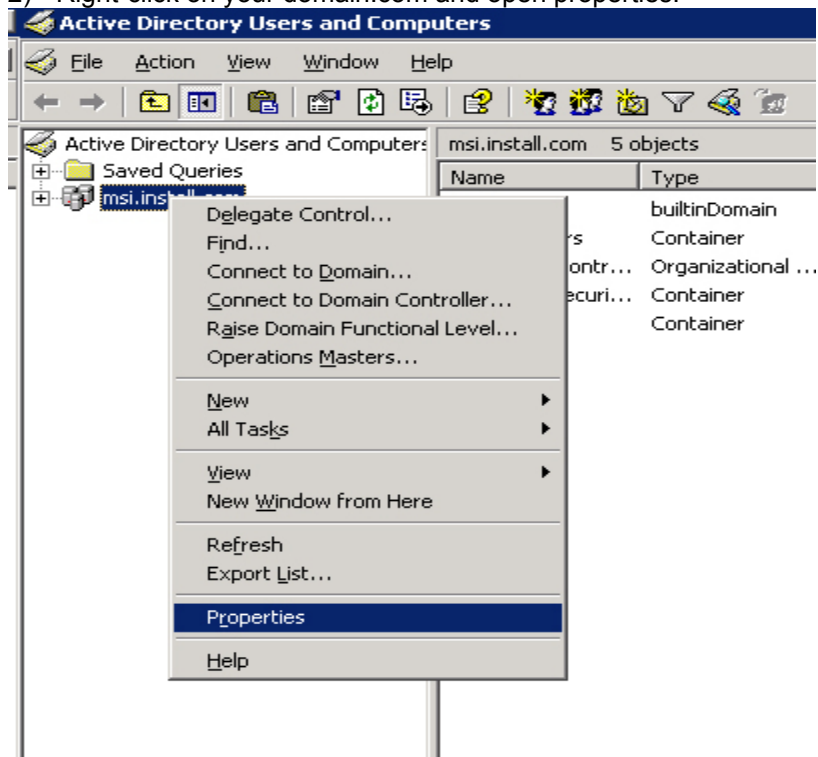


Figure 2 – Domain Properties

- 3) Select the Group Policy tab, select New and assign a name
- 4) Click on the newly create Group Policy and then select Edit.

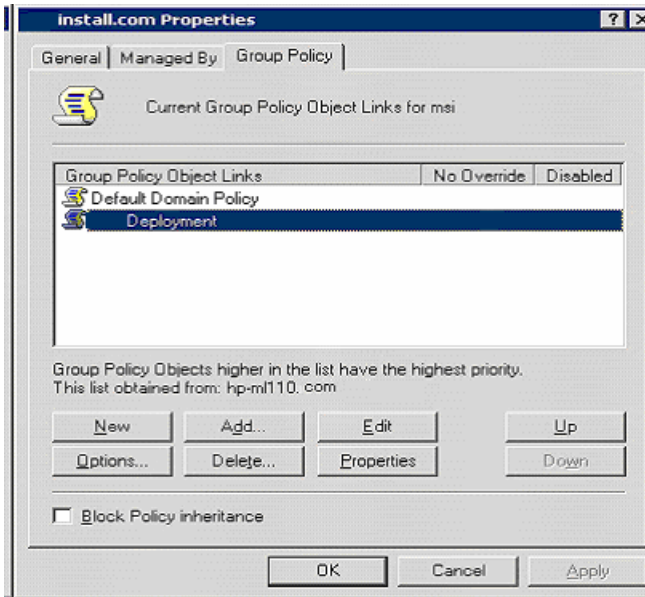


Figure 3 - Edit Group Policy

Adding Your Script to the Group Policy Object (GPO)

1) Under User Configuration \ Windows Settings \ Scripts \ Logon.

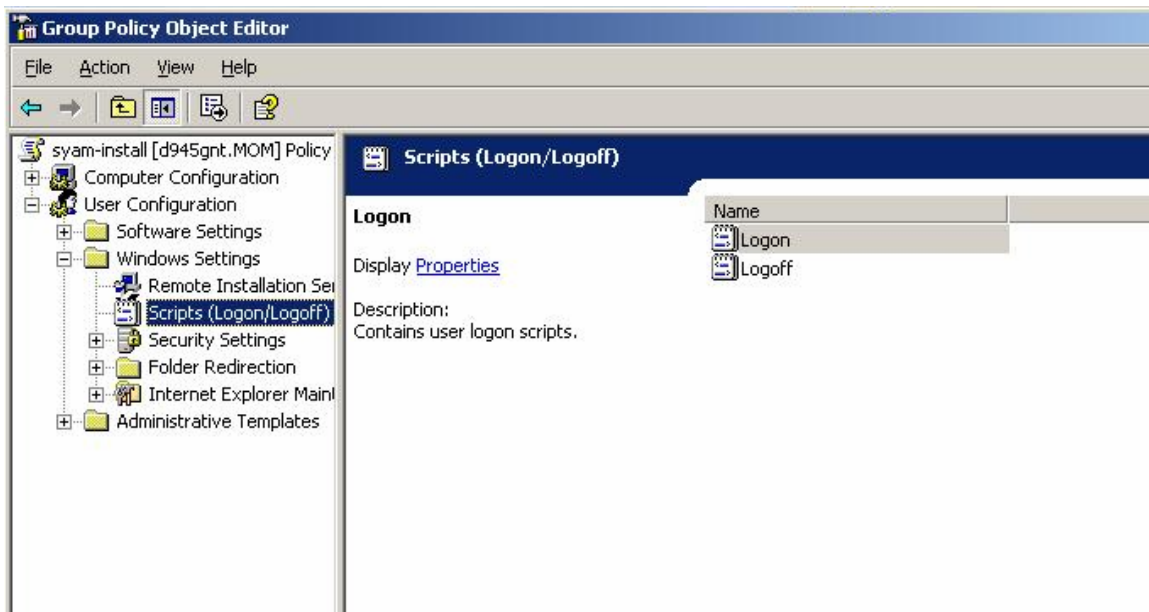


Figure 4 - GPO Editor – Opening script options

2) Double click Logon.

3) Select show files (by opening the "show files" option it takes you to the correct folder for that GPO)

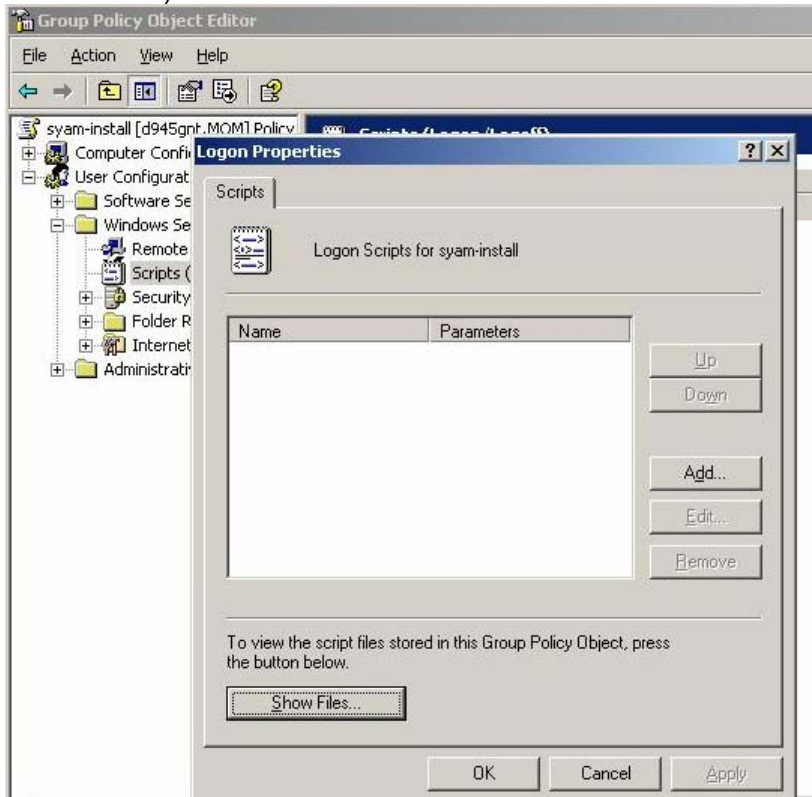


Figure 5 - GPO Editor – Adding scripts to the folder

4) Copy and paste your script into this folder – close the folder.

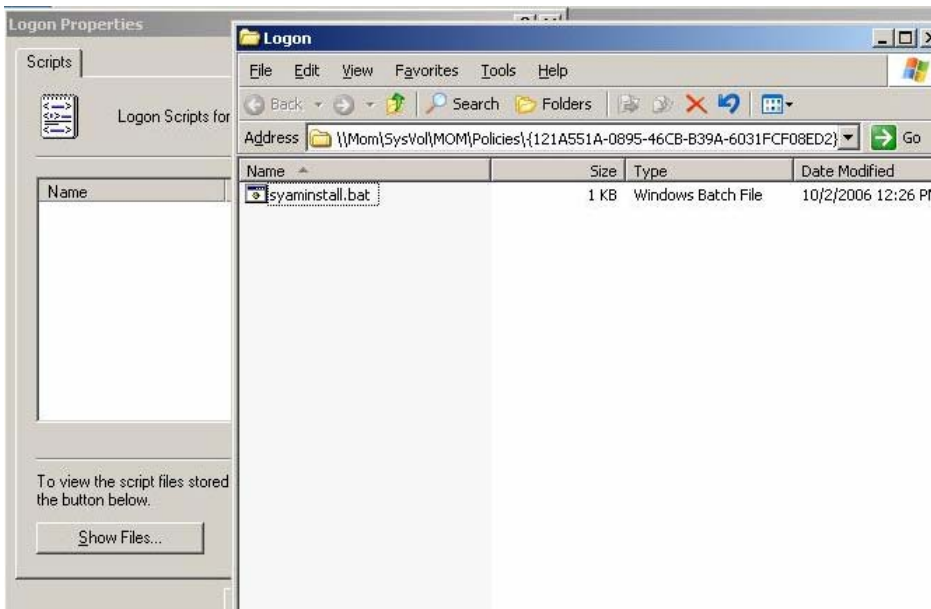


Figure 6 - GPO Editor – Copying scripts into the correct folder

- 5) Select add – Then browse to your script – select it and click open.

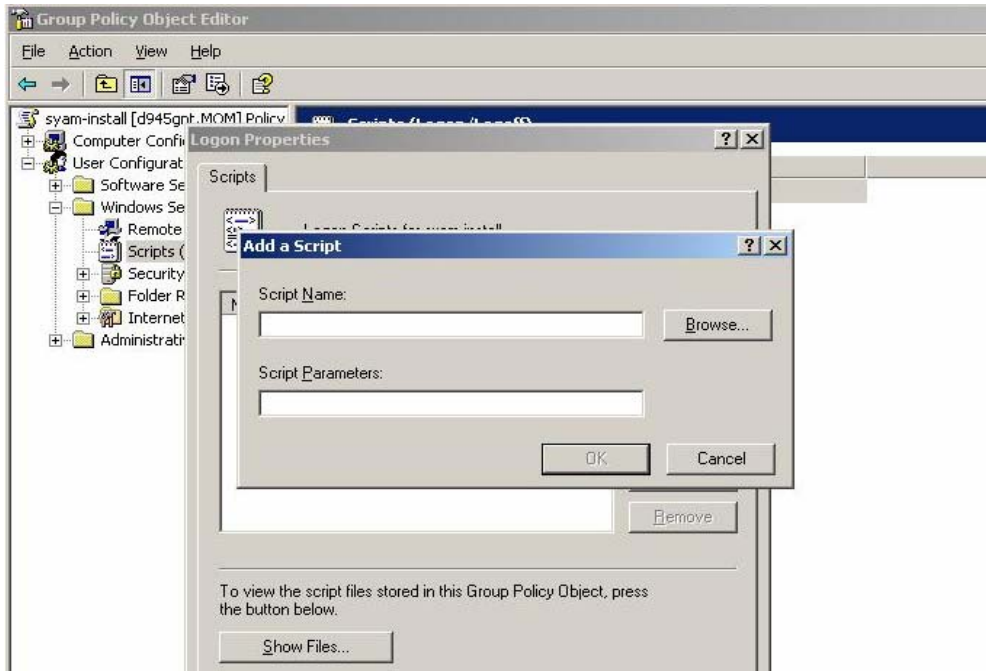


Figure 7 – GPO Editor – Browsing to your script

- 6) Click OK

- 7) Click apply – OK

Note: Script parameters will be left blank.

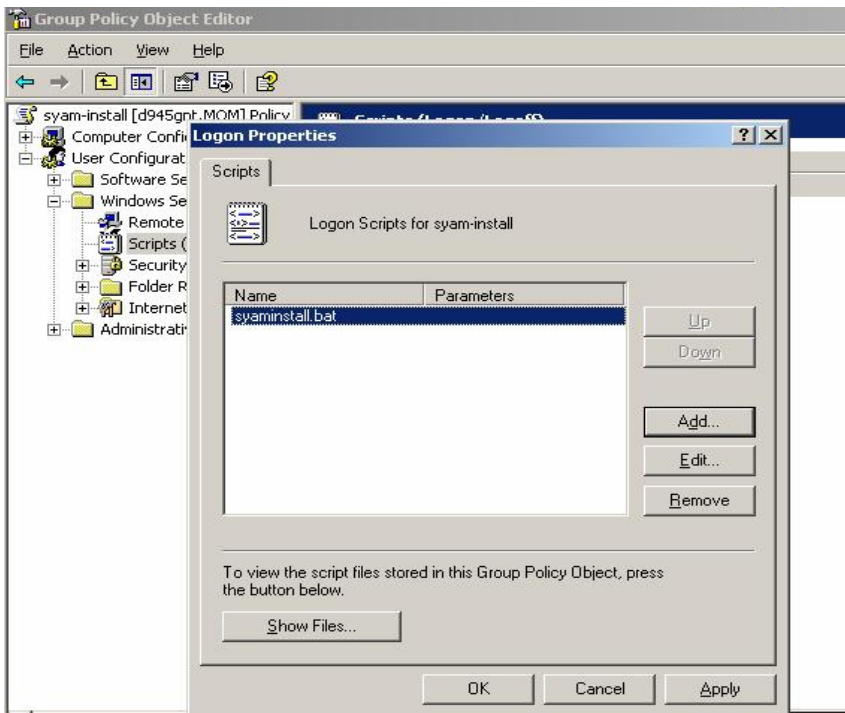


Figure 8 – GPO Editor – Script installed

Permissions for Running the Group Policy Object (GPO)

- 1) Enable the setting "Run logon scripts synchronously" under User Configuration / Administrative Templates / System / Scripts.

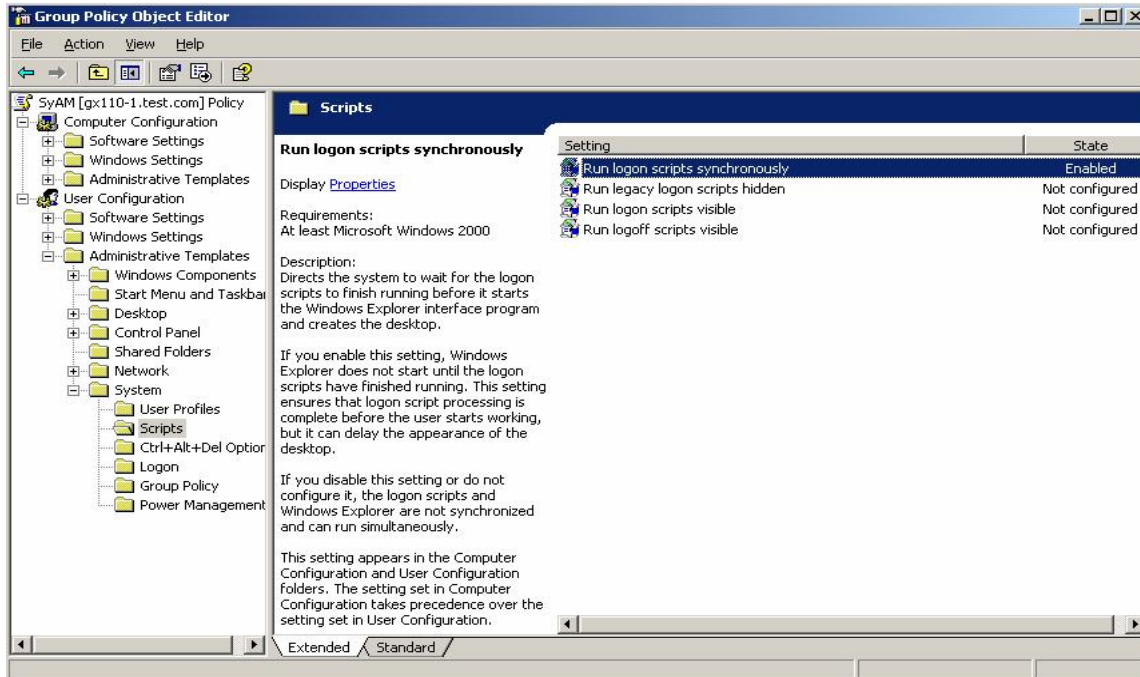


Figure 9 - Administrative Templates - Logon Scripts

- 2) Enable the setting "Always install with elevated privileges" under User Configuration / Administrative Templates / Windows Components / Windows Installer.

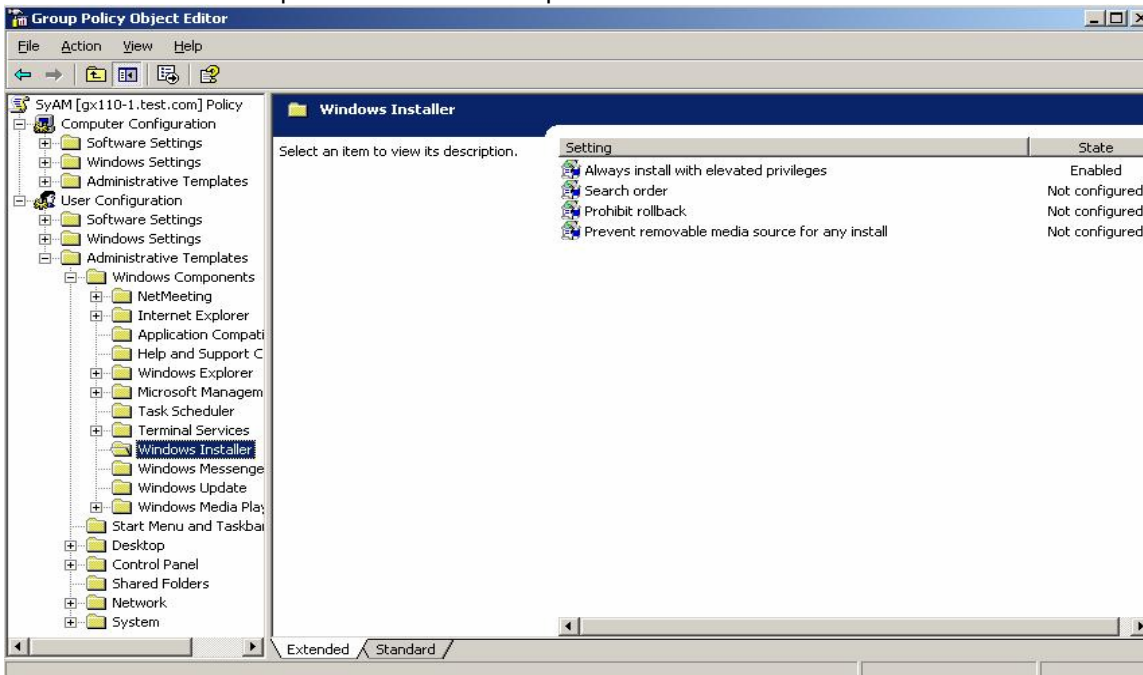


Figure 10 - Administrative Templates - Install with elevated privileges

- 3) Exit from the Group Policy Object Editor.
- 4) Open the Properties menu of the newly created Group Policy Object, click on the Security tab and add the Groups or Users that will have permissions assigned to them for this GPO. Assign the levels of permission as necessary.

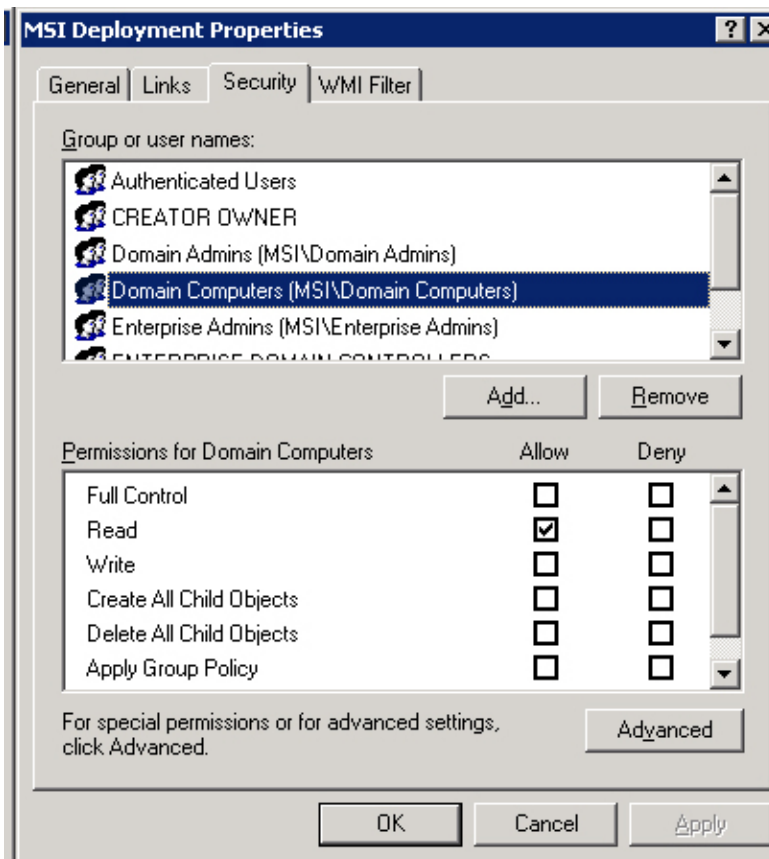


Figure 11 - GPO Permissions

- 5) Exit the Active Directory Users and Computers configuration program.
- 6) Verify that the domain computers and users that have permission to this object are able to access the network share where the software executable files reside.
- 7) Verify that the domain computers are pointed at the correct server for DNS.
- 8) The Desktop Monitor Software will be installed to the computers assigned to this GPO upon the next reboot, as long as they have administrative privileges.

Again this procedure requires an Administrative login to the actual system for the software to install. Be sure that all share permission and Active directory GPO permissions are set appropriately to access the software.

Contact SyAM Software

For additional information, sales, or technical support, contact SyAM Software:

SyAM Software, Inc.

Corporate Headquarters

1 Chestnut Street, Suite 3-I

Nashua, NH 03060

PH +1 603 598-9575

FX +1 603 598-9577

info@syamsoftware.com

888 UnifyMe (864-3963)

Sales Offices

US Sales 203 407-9180

South America +55 11 3641-3580

Mexico +52 55 8596-5078

Europe +49 8158 905933

www.syamsoftware.com