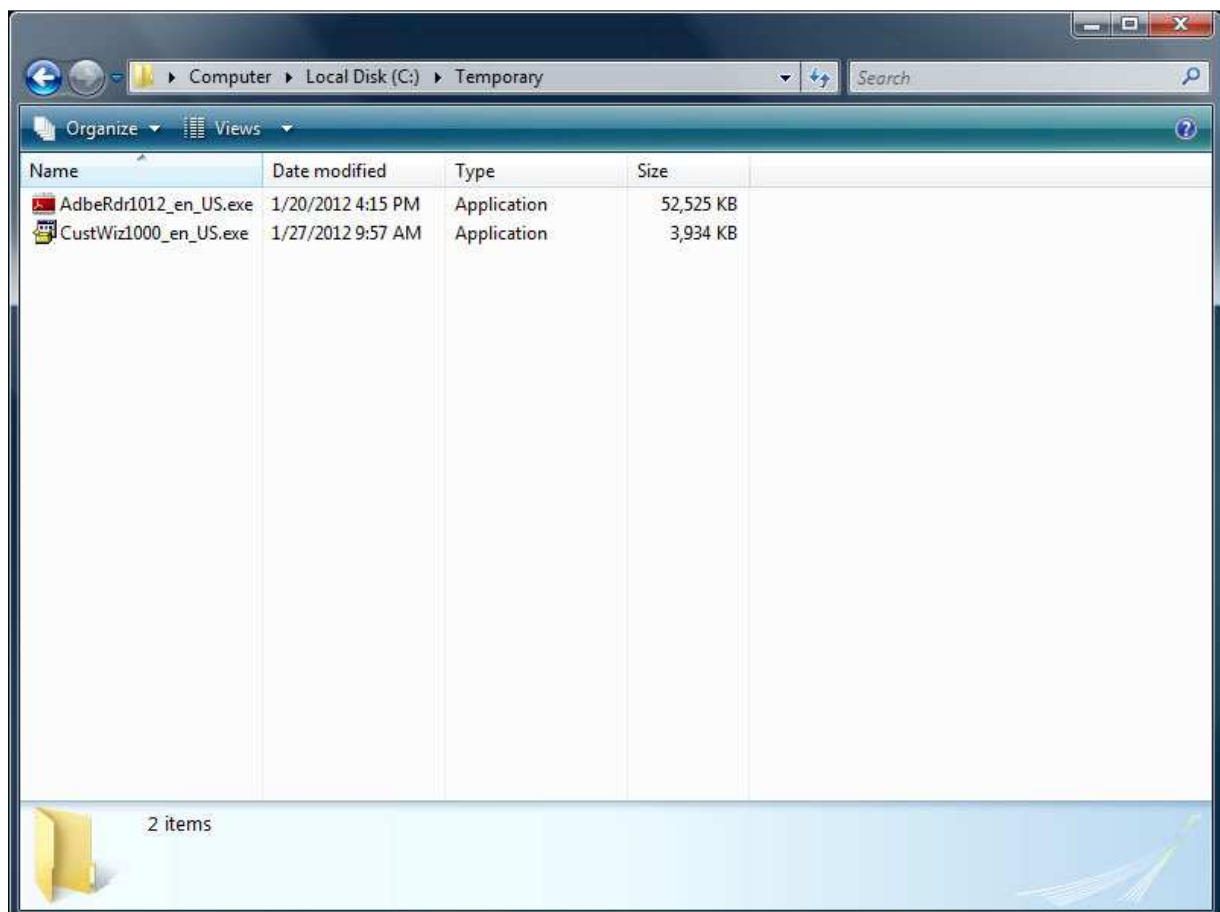


SyAM Software

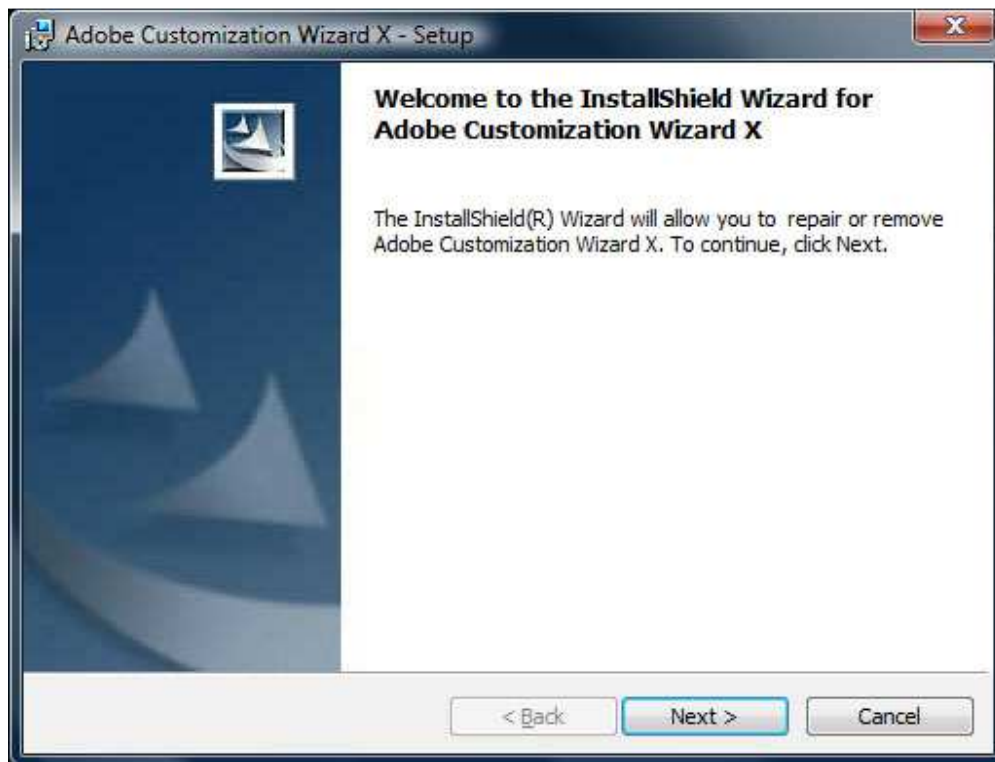
Using Management Utilities to Install Adobe Acrobat or Reader with the Adobe Customization Wizard

Adobe Customization Wizard can be used to install Adobe Acrobat or Reader with a variety of installation options. The customized installation can then be deployed using Management Utilities. In this example, we'll do a silent installation of Adobe Reader with automatic updating disabled.

Download the Customization Wizard and Reader installation executable files from Adobe. The version of Customization Wizard must be the same major release as the Reader version.



Install Adobe Customization Wizard with default settings.



To extract the files from the Adobe Reader executable, open a command prompt and change to the directory where the executable is located. This command will start the Adobe Reader installation which will extract the files to the specified directory. It is best to use a directory that does not already exist, and to specify the full path. Once the files have been extracted, the installation will terminate without taking any further action.

```
AdbeRdr1012_en_US.exe -nos_o"C:\Temporary\ReaderX" -nos_ne
```

Change the directory name as appropriate. The installation will create the directory (ReaderX, in our example) which contains the files used by the Customization Wizard, in particular AcroRead.msi and setup.ini.

From the Start Menu, run Adobe Customization Wizard. Go to the File menu and select Open Package. Navigate to the directory created in the last step, and select AcroRead.msi.

Use the menu in the left pane of the Customization Wizard to navigate through the options provided. Consult the Adobe documentation for detailed information. Some options we will choose in our example:

- Installation Options: Run Installation Silently (no interface) and Suppress reboot
- Shortcuts: Desktop – Adobe Reader X (right-click, then choose Remove. No desktop shortcut will be installed)

- EULA: Suppress display of End User License Agreement
- Online and Acrobat.com Features: Disable all updates, set Load trusted root certificates to Disable

When you are finished selecting options, go to the Transform menu and select Generate Transform. Choose a file name (in our example we'll use custom.mst) and save the file to the directory where AcroRead.msi is located (in our example, the ReaderX directory.)

Exit the Adobe Customization Wizard. Do not save changes to AcroRead.msi.

Now, create a small Windows batch file that will run the installation.

```
@ECHO OFF
msiexec /i \\192.168.100.158\apps\ReaderX\AcroRead.msi
PATCH=\\192.168.100.158\apps\ReaderX\AdbeRdrUpd1012.msp
TRANSFORMS=\\192.168.100.158\apps\ReaderX\custom.mst /qn
exit
```

Please note that while it will be displayed with line breaks in this document, the msiexec command in this example is a single line ending with /qn. The batch file contains three commands: @ECHO OFF, msiexec with associated parameters, and exit. When you copy and paste, you may need to remove line breaks and replace with spaces.

In our example, \\192.168.100.158\apps is the Default Application Path as defined on the Administration Settings page of the Management Utility. In your batch file, substitute the correct path for your environment, as well as the correct name for the transform (.mst) file.

Some Adobe Reader installations are produced by adding a patch file (with .msp extension) to an older version. The PATCH parameter should be omitted if no such file is present in the directory where AcroRead.msi is located. Substitute the name of the patch file found in that directory. Our example is correct if you are installing version 10.1.2.

Save the batch file (we'll name our file ReaderX-custom.bat) and copy it to the network share specified by the Default Application Path. Copy the directory (ReaderX, in our example) to the same network share.

In the Management Utility, create a Third Party template. Enter a template name. Select the target platform and authentication template. Enter the path to the network share containing the source executable file (this will be filled in already if the default path has been entered in Administration Settings) then click the Find Files button and choose the installation batch file (e.g. ReaderX-custom.bat) from the drop down menu. Click the Add button, save the template, and click OK to confirm.

Configure Template

Third Party Deployment Template

Define the paths to executables used to deploy third party software across your network.

Template Name:

Third Party Executable Details

Target Platform

Windows
 Linux
 Mac OS X

Select the authentication template with credentials to browse the network share entered below

Windows Admin ▾

Path to directory containing source executable file (depsvc.exe MUST be present in this directory):

Find Files... ▾

Timeout (minutes)

Parameters

Do not check for process completion (for BIOS updates)

Add

Existing Templates

Adobe Reader X - Custom

New Template

Copy Remove

Copy these files locally to each target machine before installing (required if the above is not a network share, cannot be used with local impersonation)

File Path	Parameters	Timeout	Ignore Process Completion	Platform	
\\192.168.100.158\apps\ReaderX-custom.bat		10	No	Windows	Edit Delete

Save Changes **Cancel**

Deploy the application by highlighting a system in the Groups menu , then right-click and choose Deploy Third Party Software. Select the authentication template and the third party software template, click Run Job, then click OK to confirm.